

SEC.4 Awnings

Awnings provide an opportunity to extend the storefront into the pedestrian realm, and engage passers-by. It can be fixed, or operable - allowing for it to be rolled up during inclement weather or when not needed. It can even signify to the public that your shop is open, much like a welcome flag.

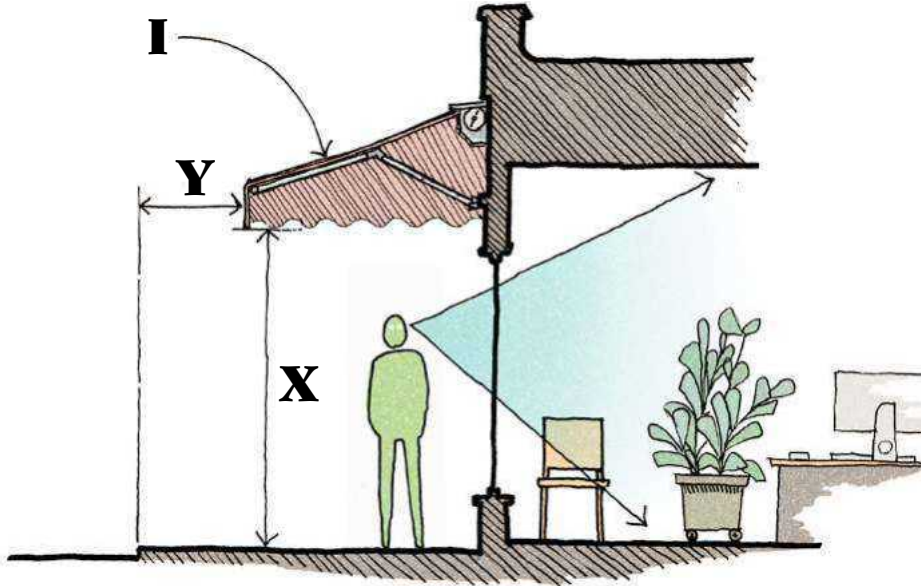
An awning sign is a sign printed on any of the surfaces of an awning, and is typically made of fabric. Awning signage is typically made of lettering written on the fabric of an awning. Lettering is most effective when printed on the valance or fringe of the awning.

Internally illuminated or back-lit awnings should be discouraged as they detract from the historic character of a village downtown. Only one village specifically prohibits this however.

Awnings are most useful on storefronts that face south with regards to shading and protecting from glare. Depending on the season and time of day, you may want to shade your storefront from direct sunlight to avoid heating the space or causing visual discomfort to employees and customers.

Awnings should be sized relative to the openings they cover, and may have a triangular or curved profile. Avoid materials that simulate others, such as aluminum or plastic awnings that mimic fabric. Coordinate fabric awnings with the building's color scheme to highlight storefronts.

Awnings can be used to provide shelter for outdoor seating from both rain and sun, and is encouraged to provide a cozy, comfortable pedestrian environment.



9 village zoning review for awnings

(Village)	Permitted	Max. Number	Illumination (I)	Vertical Clearance (X)	Max. Projection (Y)	Additional Provisions
CALEDONIA	Yes	2 per use *	N/A	N/A	N/A	N/A
AVON	Yes	2 per use *	N/A	N/A	N/A	N/A
LIMA	Yes	2 per use *	Permitted	N/A	N/A	N/A
LIVONIA	Yes	N/A	N/A	8'-0"	8'-0" or 2/3 sidewalk width	Mounted below 2nd floor sill
GENESEO	Yes	1 per use	Not Permitted	N/A	N/A	N/A
LEICESTER	Yes	N/A	N/A	N/A	N/A	6" letter size max.
MT. MORRIS	Yes	N/A	N/A	N/A	N/A	6" letter size max.
NUNDA	Yes	N/A	Permitted	8'-0"	3'-0"	Not in setbacks
DANSVILLE	Yes	N/A	Permitted	N/A	N/A	subtracted from sign

N/A - no language in existing zoning code (per 2019 review)

* - language is not specific or implied in another section



Valances can instead showcase colors related to your brand when lettering is not permitted.



Do not use metal or vinyl awnings that simulate fabric.



Do not build structured awnings that cover up historic storefront details such as transoms, columns, or cornices.



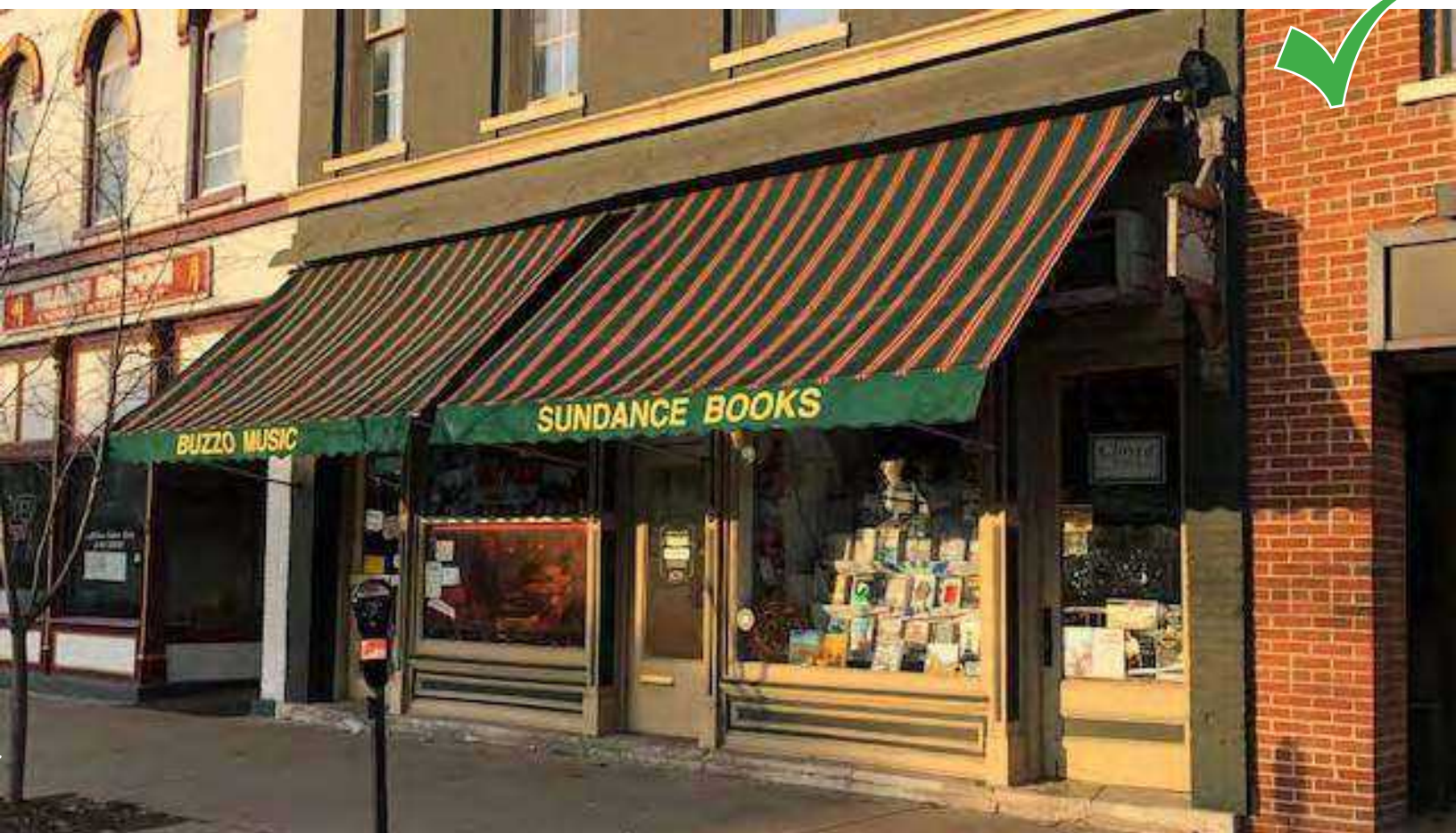
Coordinate the color of awning fabric with the facade.



Lettering on the valance (fringe) of the awning should contrast with the fabric color for legibility.



Awnings and other forms of signage should be coordinated for consistency.



Large fabric awnings can cover transom windows to block glare from southern sun and provide a historic look.